

EMA MILANO.



MILANO: A NEW BRIGHT HOME FOR
THE **EUROPEAN MEDICINES AGENCY**

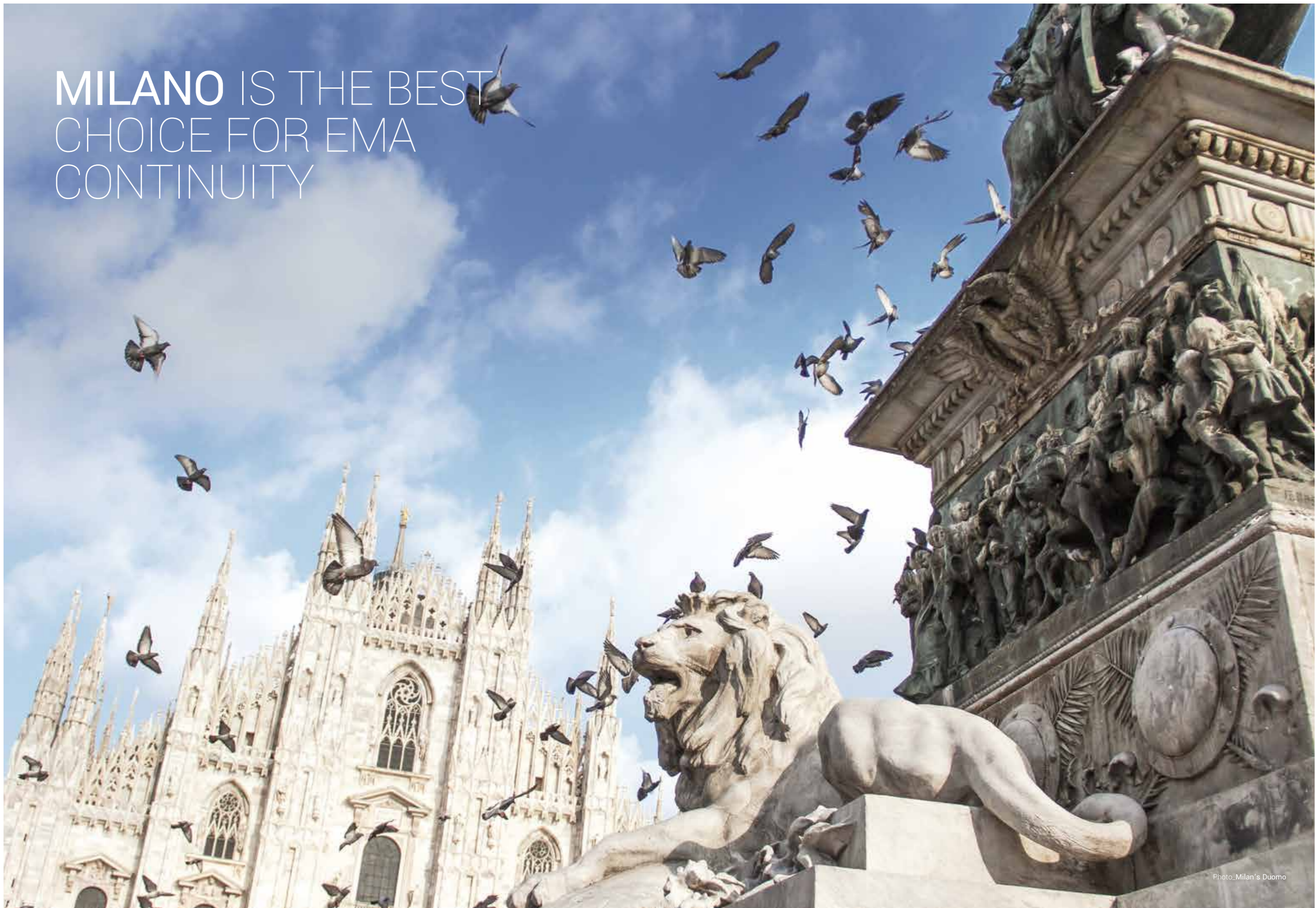


Photo_Piazza Lombardia

MILANO IS READY TO WELCOME EMA

Relocating the European Medicines Agency (EMA) to the Pirelli Building in Milan will ensure **full continuity to its institutional activity** during the post-Brexit transition away from London. Milan has **excellent links with Europe and the rest of the world**, is home to one of Europe's **best research and business environments**, and offers a **vibrant cosmopolitan lifestyle** as well as **outstanding conditions for an efficient and seamless relocation of staff and their families**.

MILANO IS THE BEST
CHOICE FOR EMA
CONTINUITY



MILANO AND EMA

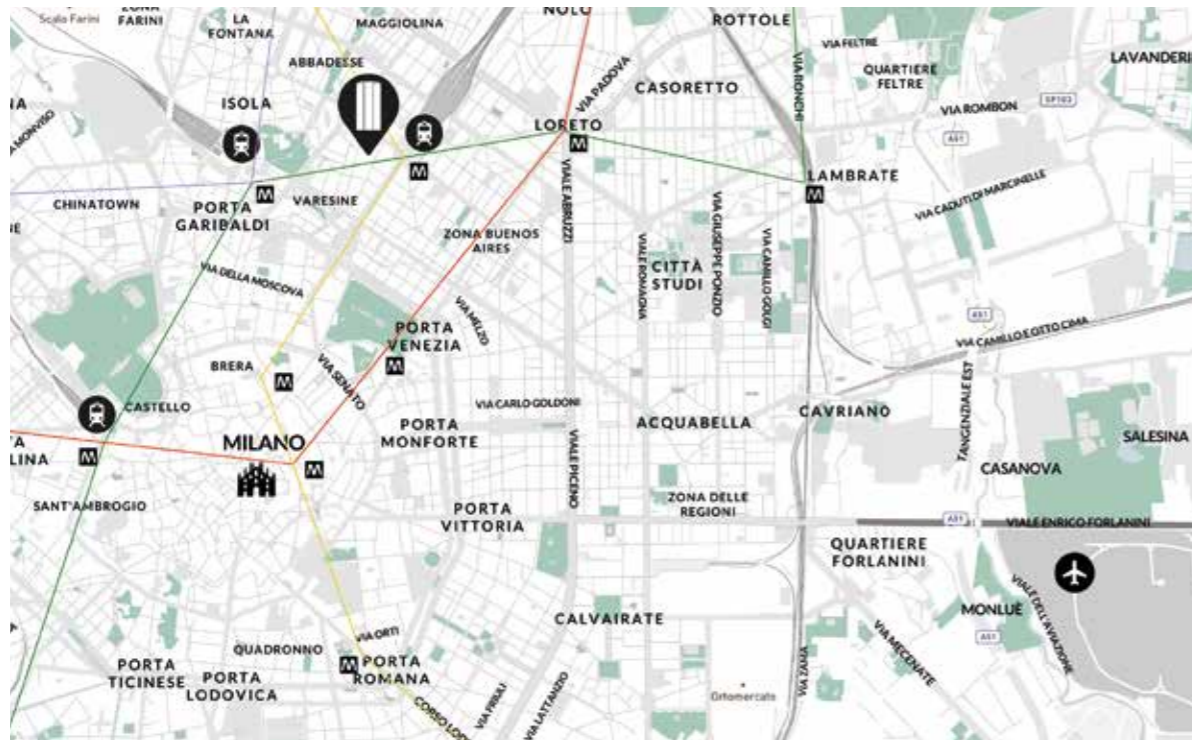
MILANO OFFERS A SMOOTH RELOCATION

The new headquarters are ready


The national government and local authorities have put in place joint measures to ensure a seamless relocation of EMA facilities.

A superbly located, ready-to-use state-owned building, the Pirelli Building (nicknamed the "Pirellone"), is proposed to host the EMA headquarters. The Pirelli building has a gross covered area of **50,260 square meters**, distributed over **31 floors**. The office space is extremely

comfortable, flexible and easy to redesign thanks to the peculiar building's infrastructure. It is complemented by **40 meeting rooms** capable of welcoming between 8 to 40 people. It has also an **auditorium with a capacity of 348 seats**, as well as **260 parking spaces for cars**, in addition to motorbikes and bicycles. A gymnasium and a variety of other services may be easily hosted inside the building.



The Pirelli Building is located in the city centre, just opposite the Milan Central Station, the city's most important transportation hub. From here there are direct links to other parts of the city, the suburbs, and other major Italian and European cities within a 1000 km radius. Two metro lines, five bus lines, three tram lines and two trolleybus routes pass through the station, with a direct train connection to Malpensa airport and shuttle bus services to all three airports. A taxi rank is located right outside the building.

 Pirelli building location.

31st Floor
Multifunctional space

208 Sq m

From the 31st
Floor down
Meeting room, offices,
open space related services
(quite/service/waiting room)

Floors 27st and 29st
Are equipped
with additional
conference rooms
(capacity 40 pax)

852,83 Sq m

1st Floor
Conference room,
Restaurant and bar

571 Sq m

Ground Floor
Hall and reception, bank,
delegates lounge, infirmary
and medical office, kitchen,
training room, office;

Basement 1
Archives, central technology,
conference room (capacity 350 pax)

Basement 2
Archives, central technology;

A welcome package for EMA staff

Customized welcome-teams and a dedicated help desk service will assist EMA administrative structures and EMA staff with reference to all the various aspects of the transition and relocation to Milan (e.g. every paperwork, housing, schooling, connections, etc.). In the Host Agreement, Italy will grant a number of special facilitations, in addition to those provided for by the 1965 Protocol on the Privileges and Immunities of the European Communities.

During the transition period (and beyond, if needed), commuting between London and Milan will be easy and efficient, thanks to the [over 250 weekly air connections](#) between the two cities, including several low-cost carriers, the wide availability of hotels and residences in the immediate surroundings of the Pirelli Building and the extraordinary accessibility of the new EMA headquarters.

A dedicated EMA help-desk will also be operating in London throughout the transition to Milan, while an information desk is already active at the premises of the Italian Embassy in London.

-  Embassy of Italy – Economic and Trade Section,
14 Three Kings Yard, London W1K 4EH
-  weekdays from 9.30 a.m to 5.00 p.m.
-  +44 (0)20 7312 2211/2258
-  londra.emamilano@esteri.it



Photo_Embassy of Italy

ALL ROADS LEAD TO MILANO

MILANO OFFERS EUROPE AT YOUR FINGERTIPS

Air connections

Milan has three major airports: **Malpensa (MXP)** with a wide network of European and intercontinental destinations, **Linate (LIN)** with convenient connections to European and Italian cities, and **Orio al Serio (BGY)**, which is an operating base for all major European low-cost airlines. **Nearly 1,300 weekly flights link Milan to 27 EU capitals and other 1,300 to main European cities including Cologne, Cracow, Barcelona, Hamburg, Istanbul, Lyon, Manchester, Moscow, Munich and Oslo.** Adverse weather conditions are rare, affecting

only 0,4% of flights arriving to or leaving Milan. Flight punctuality at Milan airports is among the best in the world (87% at LIN, best in EU in 2016, 85% at BGY, 83% at MPX). Standards are also very high for waiting time at security (<7' (90%) at LIN and MPX, <12' (90%) at BGY). There are frequent and efficient bus connections between all the three airports and the city centre of Milan. Moreover, the Malpensa airport has a direct rail connection to major railway stations in Milan (including Milano Centrale, at 3 minutes walking distance from the "Pirellone"), with a total of 158 journeys a day. **The new metro line M4, expected to be completed by 2021, will connect Linate airport directly to the city centre in 15 minutes and to the south-western areas of the city.**

* Destination Country as of June 2017	Destination	MXP	LIN	BGY	TOT	Flight Time estimated
Austria	Vienna, AT	37	-	-	37	1h 30 m
Belgium	Brussels, BE	31	37	14	82	1h 35 m
Bulgaria	Sofia, BG	10	-	7	17	2h 00 m
Croatia	Zagreb, HR	3	-	-	3	1h 30 m
Cyprus	Larnaca	2	-	-	2	3h 25 m
Czech Republic	Prague, CZ	26	-	12	38	1h 30 m
Denmark	Copenhagen, DK	27	1	13	41	2h 00 m
Estonia	Tallinn, EE	2	-	3	5	3h 00 m
Finland	Helsinki, FI	14	-	-	14	3h 00 m
France	Paris, FR	86	77	7	170	1h 30 m
Germany	Berlin, DE	14	28	14	56	1h 40 m
Greece	Athens, GR	18	-	10	28	2h 30 m
Hungary	Budapest, HU	11	-	7	18	1h 35 m
Ireland	Dublin, IE	7	7	14	28	2h 35 m
Italy	Rome-Da Vinci, IT	6	156	-	162	1h 00 m
Latvia	Riga, LV	6	-	4	10	2h 40 m
Lithuania	Vilnius, LT	-	-	10	10	2h 30 m
Luxembourg	Luxembourg, LU	24	-	4	28	1h 20 m
Malta	Malta, MT	-	7	7	14	2h 00 m
Netherlands	Amsterdam, NL	62	33	-	95	1h 50 m
Poland	Warsaw, PL	21	-	5	26	2h 05 m
Portugal	Lisbon, PT	34	-	7	41	2h 50 m
Romania	Bucharest, RO	7	14	21	42	2h 15 m
Slovakia	Bratislava, SK	-	-	4	4	1h 25 m
**Slovenia	Ljubljana/Trieste	-	16	-	16	1h 05 m
Spain	Madrid, ES	39	14	18	71	2h 20 m
Sweden	Stockholm-Arlanda, SE	8	7	-	15	2h 40 m
United Kingdom	London, EN, GB	99	129	28	256	2h 00 m
Total	EU Capitals	594	526	209		

* Weekly flights

** The city of Ljubljana is connected to the Trieste airport by direct highway (100 km, 1h00 transfer)



Photo: Milan Central Station

Train connections

A high-speed rail network links Milan to other major Italian and European cities. It takes just **3 hours to get to Rome (2h25 by 2018), 1h40 to Florence (1h... by 2018), 2h25 to Venice (1 hour by 2018), 1h45 to Genoa, 3h30 to Zurich (3h by 2020), 4 hours to Geneva and 8 hours to Paris (4 hours by 2030).** The Milan Central station is the main hub for international railway traffic to Europe and is located at 3 minutes walking distance from the future EMA premises in the 'Pirellone' building. Daily destinations include Bern, Lugano, Paris, Nice, Marseille, Wien, Barcelona, and Munich.

Road connections

Milan and its metropolitan area are at the junction of **three essential EU transport Corridors**, (the Mediterranean, the Rhone-Alpine, and the Scandinavian Mediterranean), with a highway and road network linking the region's main cities with its smaller towns (over 700km of highways and 58,000km of municipal roads). Milan is also connected by highways to the ports of Genoa and Venice, as well as to most European countries (notably, Austria, Belgium, the Czech Republic, Croatia, Denmark, France, Switzerland, Germany, Hungary, Luxemburg, the Netherlands, Poland, Romania, Slovakia, Slovenia, Spain, Sweden, and Switzerland).



MILANO MALPENSA

🚆 TRAIN	51'
🚌 BUS	50'
🚗 CAR	45'

MILANO LINATE

🚆 METRO	15' (2021)
🚌 BUS	20'
🚗 CAR	20'

MILANO ORIO

🚌 BUS	50'
🚗 CAR	45'

EXPERIENCE MILANO

MILANO OFFERS THE BEST HOSPITALITY

Acomodation

As a major economic and financial centre, a top destination for tourism (with 7 million visitors every year), and a unique destination for international events (such as EXPO Milan 2015, which saw over 20 million visitors), Milan offers a highly developed hospitality system. 69,000 beds are available in the city and a further 30,000 in the metropolitan area, accounting for a total of nearly 100,000 beds. Being located in the city centre, the new EMA headquarters will benefit from a wide choice

of accommodation options just a stone's throw away. It's always easy to find a room: an average of over 5,000 free rooms were available every night in the Milan's hospitality system in 2015, 2016, and early 2017. Furthermore, an ad hoc draft convention has been agreed upon to meet the accommodation needs of EMA's interlocutors, guaranteeing the same price per night during any period of the year.

Food and drink

With more than 17,000 restaurants, including 17 Michelin-starred ones, Milan is a superb and ideal location to enjoy the renowned Italian cuisine or sample the trendiest fusion and ethnic delicacies. Most pubs and restaurants are open all night and offer a wide range of options, including an unbelievable variety of the traditional aperitivo.

Industry events

Milan hosts one of Europe's largest trade fair systems, Fiera Milan, extending over 1,600,000 square meters with 4.5 million visitors from all over the world attending 75 major events each year. The main exhibitions include fashion, furniture and design, food and professional hospitality, applied mechanics (machine tools; machines for plastics, wood, glass; packaging), art and crafts, information and communication technology, tourism, plant engineering systems, energy production, architecture and building, security, art and photography. The famous annual Milan Furniture Fair and Milan Fashion Week are just two examples of the various events that make Milan a world-class glamorous capital.

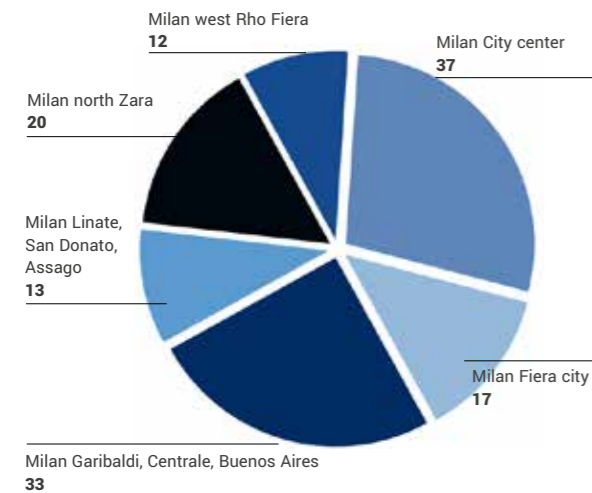
ACCOMODATION IN 2016

Milan City area	accom	beds
Five stars hotel	21	5,312
Four stars hotel	137	29,945
Three stars hotel	130	10,869
Other hotels & residence	178	8,008
Other accomodation	913	14,786
Total:	1,379	68,920

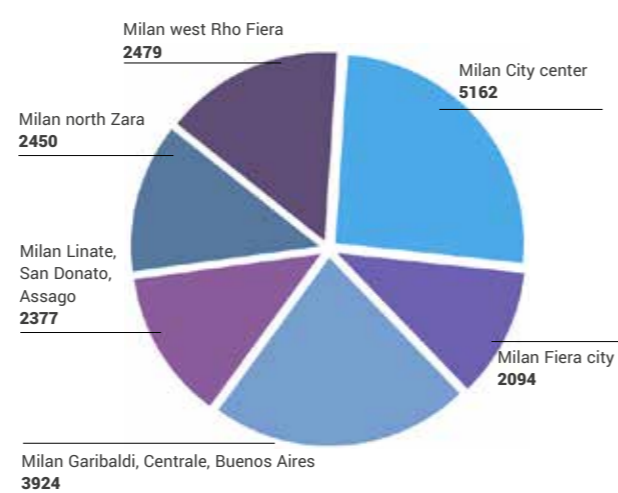
ACCOMODATION IN 2016

Milan metropolitan area	accom	beds
Five stars hotel	22	5,412
Four stars hotel	219	46,218
Three stars hotel	205	16,823
Other hotels & residence	223	12,599
Other accomodation	1,279	17,324
Total:	1,948	98,376

HOTELS (NUMBER OF)



ROOMS (NUMBER OF)



MILANO PROVIDES A UNIQUE BREEDING GROUD FOR SCIENCE, RESEARCH AND INNOVATION

MILANO OFFERS SCIENCE AND INNOVATION

A unique ground for science and innovation

Eleven universities and five world-wide known art academies, with more than 200,000 students, as well as an extensive network of public and private research institutions, create a vibrant environment for research and innovation. Since centuries Milan and the region Lombardy have developed a strong industrial and business tradition. According to Eurostat, its GDP per capita in Purchasing Power Standard is among the highest within the EU. Italy has the second largest pharmaceutical industry in Europe in terms of production volumes and is the world's largest exporter of medicines per capita. Milan and its metropolitan area account for 60% of Italy's overall pharmaceutical production. Milan's regional area life science sector counts for 40 billion euro of value added every year. 700 million euro have been invested in clinical trials over the last three years, contributing to make Italy the third leading European market with 8% of all commercial clinical trials and 27% of all non-profit clinical trials in the EU. Moreover, streamlined administrative procedures and an entrepreneur-friendly approach make Milan

an ideal city in which to invest and create new opportunities. Italy was among the very first European countries to modernize its regulatory and market access framework back in the 1990s, then establishing the Italian Medicines Agency (AIFA) in 2004. As a result, Italy has developed a specific know-how, as well as analytical and procedural capabilities to perform modern regulatory function. Italy moved more rapidly than other EU countries in setting up the managed entry agreements (MEA) with the pharmaceutical industry; thus developing an approach based on an effective fruitful dialogue between the regulator and stakeholders. Consequently, EMA could benefit from the Italian proved experience as well as from the well-developed network of high-level researchers and clinicians from academia, public and private research institutes, hospitals and academic societies with links to patient associations and practitioners. Needing to be at the forefront of innovation, EMA ought to develop updated tools as long as new therapeutic classes get access to the market. Therefore, EMA will require highly qualified scientific and regulatory competences, that Milan



and Italy can ensure thanks to their academic strength in biotechnology, bio-engineering and analytics. It is noteworthy that since 1996 Italy has ranked at the top 3 (together with the UK and Germany) among EU/EFTA Countries for research productivity in both the field of Pharmacology, Toxicology and Pharmaceutics, and the field of Medicine, taking into account relevant publications, citations, and impact factor.

Moreover, advanced analytics and 'big data' are changing the role of regulators by imposing to their monitoring duty more accurate, predictive and surveillance methods, allowing to identify safety signals arising from rare events. Milan can offer very strong credentials in this field, given its scientific and academic expertise in statistics, computer science, information systems, and data engineering.

TOP 10 EU / EFTA Countries for research productivity in the field of Medicine (2016)

Country	Documents	Citable documents	Citations	Self-Citations	Citations per Document	H index
United Kingdom	58889	49447	97569	26883	1.66	884
Germany	4426	41574	71344	20090	1.48	736
Italy	48096	28938	55763	15888	1.63	660
France	32096	27791	51997	11105	1.62	708
Spain	25224	21301	35565	7169	1.41	527
Netherlands	22688	20120	44664	8520	1.97	661
Switzerland	15096	13126	29238	5028	1.94	585
Sweden	12837	11415	24410	4021	1.90	549
Belgium	10502	9323	22451	3085	2.14	527
Denmark	9475	8581	19506	3332	2.06	471

Source: Shimago Lab, Scopus Data, www.scimagojr.com

The Italian Medicines Agency (AIFA).

AIFA is one of the first medicines agencies with regulatory functions created within the European Union. Only the United Kingdom and Germany have moved as rapidly. AIFA is responsible for clinical trials, assessment and marketing authorization, pharmacovigilance and post-marketing surveillance of medicinal products. AIFA is also in charge of all inspection activities involved in the authorization of plants and laboratories manufacturing raw materials and final products. As a key partner of EMA, national competent Authorities, and other European and international organisations (e.g. European Commission, EDQM, WHO), AIFA has adopted a collaborative working model, aimed at harmonizing regulatory approaches in the pharmaceutical sector for the sake of public health. This factor will be of the utmost relevance in EMA's relocation to Milan. The Italian regulator has always succeeded in managing smooth pharmaceutical accesses, contributing to keep healthcare budgets under control with no delay to the entry onto the market of innovative drugs. AIFA collaborates with an extensive network of top researchers and clinicians from academia, public and private research institutes, hospitals and academic societies as well as patients' associations.

TOP 10 EU / EFTA Countries for research productivity in the field of Pharmacology, Toxicology and Pharmaceutics (2016)

Country	Documents	Citable documents	Citations	Self-Citations	Citations per Document	H index
United Kingdom	4601	4166	7031	1953	1.53	347
Germany	4426	4032	6276	1927	1.42	296
Italy	3643	3408	5834	2184	1.60	232
France	2749	2574	3843	997	1.40	269
Spain	2251	2122	3203	870	1.42	191
Netherlands	1601	1470	2599	620	1.62	218
Switzerland	1410	1333	2429	640	1.72	228
Poland	1358	1333	1560	495	1.15	125
Belgium	1153	1079	2072	459	1.80	195
Sweden	967	919	1724	315	1.78	207

Source: Shimago Lab, Scopus Data, www.scimagojr.com

4 

UNIVERSITIES DEDICATED
MEDICAL SCIENCES

56 

FACULTIES OF MEDICINE AND RELATED
MATTERS, SUCH AS BIOTECHNOLOGY

17 

HOSPITAL SCIENTIFIC CENTERS

32 

RESEARCH CENTERS

RELOCATING EMA TO MILANO WILL CREATE AN EU SCIENTIFIC HUB

An EU scientific hub

The **Joint Research Centre (JRC)**, the European Commission's science and knowledge Directorate General, is based in Ispra (Varese), **60km north of Milan**; the **European Food Safety Authority (EFSA)** is based in Parma, **120km south-east of the City**; and the **European Training Foundation (ETF)** is based in Turin, **140km to the west**. Relocating EMA to Milan would strengthen the bonds among the three European bodies, all operating in science and research, while enhancing and broadening their scientific cooperation in common fields of activity (particularly health, food and nutrition). Moving EMA to Milan would also create a unique **hub of scientific networks and collaborations** with relevant stakeholders, to the final benefit of European citizens.

MILANO IS THE BEST CHOICE FOR EMA STAFF AND THEIR FAMILIES





Previous page left: Photo_Isola Neighborhood
Previous page right: Photo_Sforza Castle

Education

Milan offers a comprehensive network of foreign and international schools.

The Deutsche Schule Mailand, the French Lycée Stendhal de Milan and the Swiss School of Milan follow their national curricula, awarding qualifications that are recognized in both their home countries and Italy.

Eight international schools (i.e. the American Scholl of Milan, the Bloom International College, the British School of Milan Sir James Henderson, the Canadian School of Milan, the Collegio San Carlo, the International School of Milan, the Ludum School and the St. Louis School of Milan) offer a full curriculum taught in English, plus a second or third EU language, and award the international baccalaureate, the international diploma granting access to universities in over 80 countries.

Milan is also home to the European Bilingual

School, which offers a bilingual curriculum in English and Italian. A special mention should be made of the European School of Varese (60km north of Milan), which already hosts over 1,300 students from 47 different nationalities in five language sections (Dutch, English, French, German, and Italian) and awards the European baccalaureate.

Other two international schools, awarding the international baccalaureate, are located in the immediate hinterland of Milan, the International School of Milan (Monza Campus, 19km north of Milan), and the International School of Como (43 km north of Milan).

A specific survey conducted by the Italian Ministry of Education and the City of Milan in June 2017, found out that **a total of over 4,500 places will be available in the academic year 2018/19** in the above-mentioned foreign and international schools.

THE VERY BEST OF ITALY IN THE HEART OF EUROPE

MILANO OFFERS ITALIAN LIFESTYLE

The very best of Italy in the heart of Europe

Quality of life in Milan is one of the most glamorous in the world, with high-quality housing at competitive prices, an health system, a comprehensive network of international schools, a thriving artistic and cultural environment, an outstanding food scene, and an efficient public transport system including fully developed car- and bike-sharing schemes, to cite just a few of the city's attractions.

In Milan EMA staff and their families could join an amazing international expat community, but also easily integrate into the local social fabric thanks to the traditional Italian hospitality.

Because of all these factors, the life expectancy in Milan is 81 y.o. for males and 85,5 y.o. for women, among the highest in Europe and in the world.

Real estate market

Milan and its surroundings offer a wide choice of high quality residential options at competitive prices. Excellent opportunities exist in Milan's historical heart; a number of central areas, such as the City Life, Porta Nuova, Garibaldi and Darsena, have been recently transformed and restructured into contemporary commercial and residential neighbourhoods.

Two-bedroom apartments can be rented for €2,000-€2,500 a month in these central areas, while less expensive accommodations are available in the suburbs.

A variety of possibilities exist close to Milan in its hinterland, notably towards Ispra (Varese), where the European School is located since 1965, as well as the JRC site and its multinational staff community.

Health

Milan offers an excellent health system through a network of 30 public and private hospitals, 12 of them with emergency rooms offering dedicated assistance for foreign patients. Specialist paediatric hospitals are available (e.g. Mangiagalli Hospital) while all major hospitals have paediatric departments. Milan also has a number of medical centres dedicated to the large expat community living in the city, such as the American International Medical Centre and the International Health Centre. Residents from EU/EFTA member states, as well as third-country nationals with a valid residence permit, are entitled to medical assistance from the Italian National Health Service (SSN), one of the most advanced in the world.



Photo_Statale University

Local transportation

The 2013 Sustainable Urban Mobility Plan reshaped Milan's overall mobility, strengthening and extending the public transportation system, through new underground, tram and bus lines, an integrated fare system, and the introduction of the principle of no barriers for disabled people.

Today Milan boasts 4,700 surface public transport stops, able to efficiently serve the 1.3 million residents of the city plus 800,000 daily users and 250,000 visitors during international fairs and major events.

Milan offers 4 metro lines (plus one under construction), covering a total of 96,8km with 113 stations, and 122 bus and tram routes covering over 1000km. Compared with major European capitals, Milan has competitive public-transport rates, with a single journey costing €1.50.

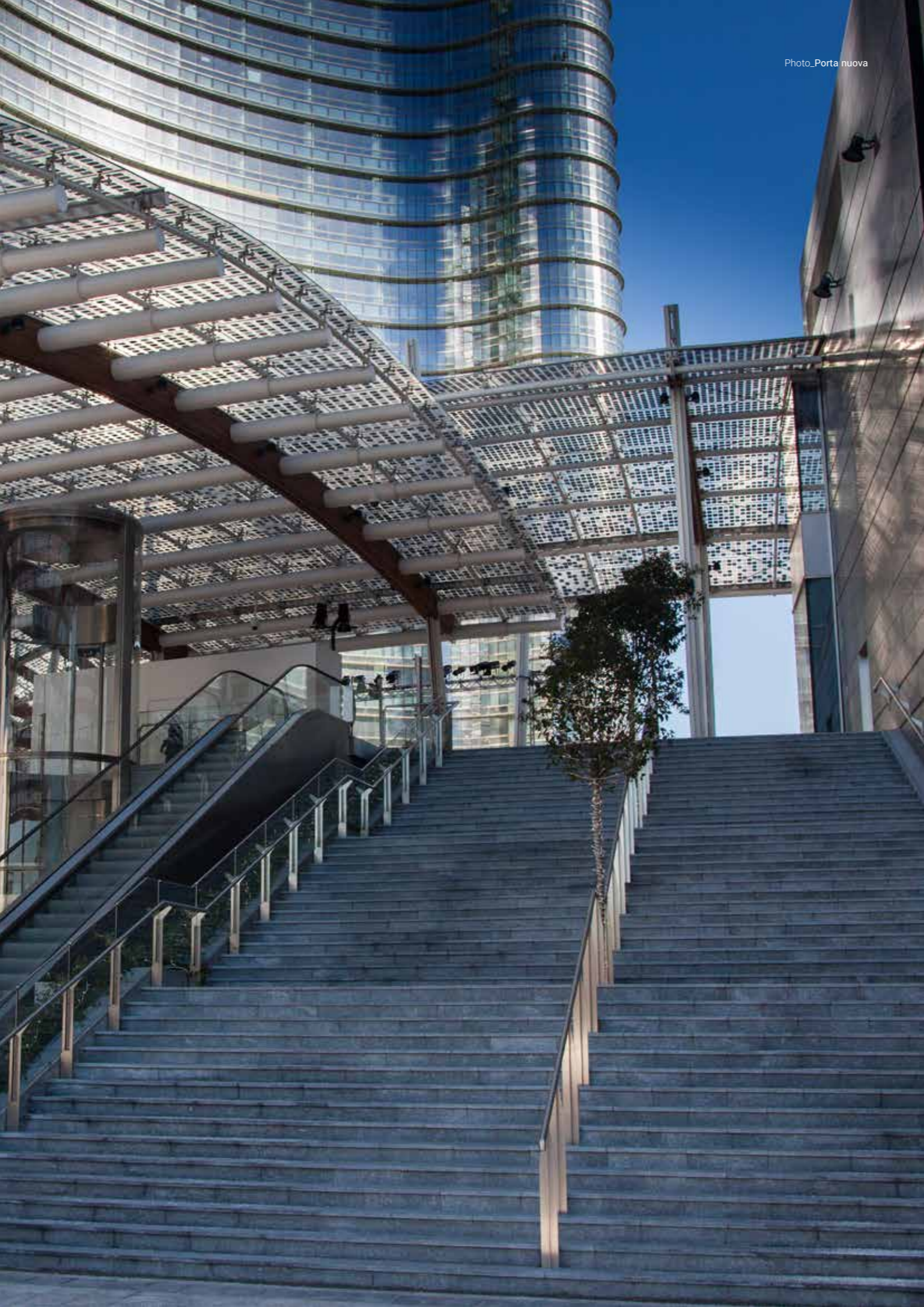
Milan is also leader in promoting new green public transportation. In 2012 a road pricing scheme (Area C) was successfully launched in order to improve living conditions for visitors and those who live, work and study in the city. In 2016 the Area C rules were further tightened, banning all commercial vehicles from access to the city centre from 8am to 10am. Car-sharing is widely used, with over 1,600 free-floating cars, as is the public bike-sharing service with 280 stations, 4,650 bikes and 1,000 electric bikes.

Immunities and privileges

Italy grants to EU and international institution and agencies based within its territory several generous advantages in addition to those fixed by the 1965 Protocol on the Privileges and Immunities of the European Communities.

The comprehensive measures are provided by the Host Agreement and will further facilitate EMA staff relocation to Milan.





Photo_Porta nuova

Left: Photo_UNESCO World Heritage Site, Mantova (Palazzo Te's Chamber of Giants)
Right: Photo_UNESCO World Heritage Site, Venetian Walls of Bergamo

Leisure activities

Enjoying a cultural heritage that dates back to the Roman empire, and having been one of the most important cultural and art centers throughout history, Milan remains a yardstick for a modern, sophisticated way of life, offering a safe, tolerant, and open social and cultural environment. In Milan there are 150 art galleries, 28 museums and 37 theatres as well the Teatro alla Scala, the most famous opera theatre in the world. Milan has 54 parks covering a green area of approximately 14,681,400sqm, as well as other green spaces, including 21 splendid Italian gardens, adding further to the quality of life of its citizens. To discover Milan's superlative touristic offer, please visit the Milan Tourist Board's website at <https://www.turismo.milano.it/wps/portal/tur/en>. Italy's history and culture make living in Milan a very stimulating experience. Milan is just around 45 minutes away (by car, bus

and/or train) from the gorgeous big Italian lakes (Lago di Garda, Lago Maggiore, Lago di Como), ideal for bathing, sailing and water-skiing. It is 125km north of the coast of Liguria with its lovely towns of Portofino, Portovenere and Sanremo; and on average, it takes 3 hours by car (less by train) to reach the Adriatic See coast and the seaside of Venice, Rimini and Riccione. Milan is also 175km east of the luxury ski resorts of Valle d'Aosta, Bormio and Livigno. The historic towns of Bergamo, Brescia, Como, Cremona, Lecco, Lodi, Mantua, Pavia, Sondrio, and Varese are just a few kilometres away and, thanks to high-speed rail connections, some of the most beautiful and world known Italian cities, like Bologna, Florence, Rome, Turin, Venice, and Verona can be reached in less than three hours to spend several enjoyable weekends.





IMPRESSIVE ECONOMIC STRENGTH

MILANO OFFERS CAREER OPPORTUNITIES

Milan has always been considered the economic capital of Italy, being also one of the top leading European and international town in term of Gross Domestic Product (GDP). In 2016 the **Milan metropolitan area had a GDP of €153 billion (higher than the national GDP of 11 EU Member States)** and accounting for 12% of Italy's GDP), while the Lombardy Region (the Milan regional area) had a GDP of €359 billion (roughly a quarter of the country's total and **higher than the national GDP of 17 EU Member States**). Milan is remarkably efficient in **financial and banking services, as well as in engineering, communication, manufacturing, energy**, and basic and applied research and innovation.

The city also plays an unrivalled leading role in the **industrial design and in the fashion industry**. Reflecting its centrality to the European continent, nearly **3,000 multinational companies** (with 180,000 employees and a yearly turnover of €180 billion) have chosen Milan as their base from which to manage their operations in Italy, Europe and the Mediterranean.

Several **career opportunities** are readily available also for non-Italian-speaking workers, especially for **skilled international workers** like EMA staff's family members and/or partners. The EMA staff dedicated welcome-teams and help desk will grant all needed assistance.

Photo_Pirelli building

EMA MILANO.

www.emamilano.eu

EMA help-desk

weekdays from 9.30 a.m to 5.00 p.m. CET +44 (0)20 7312 2211/2258,
londra.emamilano@esteri.it

